

# CRYSTAL AWARDS

presented by ASID COLORADO



Enclosed are the winners of the 2015 Crystal awards. These ASID members have achieved excellence in commercial and residential design.



## Commercial Under 15,000 Square Feet

COMCAST WHOLSALE

**BURKETTDESIGN, INC.**

Michele Ponicsan, Renee Riviere and Jessica Margolis

### **What was the most difficult challenge of this project?**

Harder Working Space - Real estate is at a premium and we are all constantly looking to do more with less. This space was designed to embody that principle. Required demonstration areas were paramount, however their large expanse had to be expertly balanced with a dense staff program in the finite amount of available space on the floor.

### **How did you resolve it?**

Demonstration, event and collaboration comingle in a single space. Opening the operable glass partition, the area doubles while integrating the kitchen for catering. Agile stations permit desired staff count and workflow while creating the opportunity for multiple collaborative spaces which afford a landscape of neighborhoods vs. a high density environment.

### **What was your favorite aspect of this project?**

Team. The client's passion for an environment to engage employees was paramount. Their unwavering focus on elevating the employee experience, in turn elevating collaboration and innovation was inspirational. The client, design and construction team was seamlessly integrated providing a relaxed, united vision, emerging as a signature space that exceeded expectations.



---

## Commercial Over 15,000 Square Feet

HOLLAND & HART LLP, BOISE IDAHO

**BURKETTDESIGN, INC.**

Gillian Hallock Johnson, Lynsey Grace and Lily VanBuskirk

### **What was the most difficult challenge of this project?**

The "turnkey" approach was the biggest challenge on the project. Because the project was conceived by a developer, they wanted to have their own architect produce the construction documentation. Our challenge was to establish the highest level of expectation related to the quality of design, craftsmanship and detail.

### **How did you resolve it?**

We resolved the challenge by embracing the developer's team as collaborators in order to generate excitement and cultivate their investment in the final design. Multiple site visits, 3-D modeling, and positive negotiation raised the level of collaboration with the developer team and became critical to the drive for quality solutions.

### **What was your favorite aspect of this project?**

Our favorite aspect of the project was the visionary leadership shown by our client. We were delighted that this attorney, who had been residing in extremely traditional space, wanted the new space to be transformational and life-giving to the firm. Through osmosis the space has also been life-giving to Boise.





## Hospitality

WEST BUILDING AT THE BROADMOOR

JOHNSON DAVID INTERIORS

Johnson David Interiors, David Fritz and Cindy Johnson

### What was the most difficult challenge of this project?

The most challenging aspect of the project in regards to the Interiors was the scale of the project. From the very detailed Public Spaces to the renovation of existing guestrooms including the building expansion to accommodate the new bath configurations as well as the 3 floor addition onto the building with new guestrooms and suites.

### How did you resolve it?

Intense planning and anticipation of site conditions, many conference calls and weekly on site Construction meetings providing swift solutions to field questions.

### What was your favorite aspect of this project?

Our favorite aspect of the project was seeing the transformation of a 40 -year old structure renovated with a complete aesthetic overhaul to meet the Owners expectations and how truly awesome it looks!

## Healthcare

HERITAGE PROJECT, SAINT JOSEPH HOSPITAL - SCL HEALTH

GALLUN SNOW

H+L Architecture, Gallun Snow, ZGF Architects, Nine dot Arts and H+L Architecture and Davis Partnership Joint Venture



### What was the most difficult challenge of this project?

The most challenging aspect of the project in regards to the Interiors was the scale of the project. From the very detailed Public Spaces to the renovation of existing guestrooms including the building expansion to accommodate the new bath configurations as well as the 3 floor addition onto the building with new guestrooms and suites.

### How did you resolve it?

Intense planning and anticipation of site conditions, many conference calls and weekly on site Construction meetings providing swift solutions to field questions.

### What was your favorite aspect of this project?

Our favorite aspect of the project was seeing the transformation of a 40 -year old structure renovated with a complete aesthetic overhaul to meet the Owners expectations and how truly awesome it looks!

# Institutional

RALPH L. CARR COLORADO JUDICIAL CENTER

FENTRESS ARCHITECTS

Curt Fentress, Bob Louden, Martin Eiss, Ann Marie Roy,  
Charles Cannon and Jeremy Phillips

## What was the most difficult challenge of this project?

Being a highly visible project with high expectations meant that there was strong involvement by the client in almost every detailed design decision. This required the entire design and construction team to be ultra-diligent in working out details to create a seamless interface between design components.

## How did you resolve it?

We used a combination of renderings, models and full-scale mockups to describe the design to the client for their review and approval. The use of BIM with the design team and the subcontractors facilitated accurate trade coordination in working out interface detailing throughout the design process.

## What was your favorite aspect of this project?

Working on such a high profile project with lofty goals was a unique opportunity. There was incredible pride of ownership from the client to the design team to the construction trades. The teamwork displayed on this project was unparalleled and resulted in an incredibly well-executed design.



# Commercial Renovation

INNOVEST PORTFOLIO SOLUTIONS

ELSY STUDIOS

Carmen Schechinger, Lynn Coit, and Sarah Zales

## What was the most difficult challenge of this project?

Designing on a tight budget does not typically allow for upgraded finishes and custom designs, especially artwork. Our design team had to incorporate art onto the existing architectural glass in order to achieve the desired look.

## How did you resolve it?

Our client specifically requested that the conference room glass be obscured with a privacy film which provided a canvas for colorful abstract art. The custom Lynnel art film incorporates the office color palette and ties the whole design together into one attractive (and a little daring) package.

## What was your favorite aspect of this project?

The first impression when someone enters the lobby. The question they get asked repeatedly "Did you move?" No- the design team successfully created a like new space with clever finish applications throughout the lobby, including the star feature of the art film which leaves a lasting impression.



# LEED Project

ACADEMIC OFFICE BUILDING, UNIVERSITY OF COLORADO, CO SPRINGS  
SLATERPAULL | HORD COPLAN MACHT

Jennifer Cordes, Gwen Gilley, Travis Bostic, Michelle Horn, Christine Poppe, Joel Pehrson, Antonio Andrade, Kelsey Myron-Karels, Ara Massey, Gary Reynolds, Carolyn Fox, Stan Rovira, Cator Ruma, Civitas, REI, Shen Milson Wilke, Terra Nova and Nunn Construction

### What was the most difficult challenge of this project?

The University's ambitious goal to achieve 40% energy reduction over ASHRAE 90.1 turned out to be difficult to realize. The team analyzed ambitious strategies with the mechanical system, building envelope and daylighting strategies, and still struggled to meet this goal, as the small site make renewable energy systems unrealistic.

### How did you resolve it?

The design team utilized Sefeira for conceptual energy modeling, which allowed the team to make modifications and continuously verify the energy targets. A narrow building footprint of 60 feet wide from north to south allowing for optimum daylighting to all offices, a highly insulated envelope, and high performance HVAC system.

### What was your favorite aspect of this project?

The most dramatic spaces created in the building include a 4th floor roof deck and conference rooms on every floor oriented to maximize spectacular views to Pikes Peak. These are intended to provide a space for the building occupants to socialize and create community.



# Single Space, Dedicated Function (Commercial)

CLOUD CAMP LODGE

JOHNSON DAVID INTERIORS

David Fritz, Cindy Johnson and Courtney Cunningham



### What was the most difficult challenge of this project?

The most challenging aspect of the project in regards to the Interiors was finding qualified American made artisans which could craft the custom furnishings and lighting required for the project.

### How did you resolve it?

With current design trending in a more modern fashion it forced the design team to travel to areas with-in the Rocky Mountains searching for unique craftsmen who worked with log furnishings, and custom hand forged iron appropriate for a Lodge environment.

### What was your favorite aspect of this project?

The project program. The design teams feels that never again in their careers will they be commissioned to create a Lodge which reveals the Great Lodges of the National Parks where visitors from all over the world can come to Colorado to enjoy a true Wilderness Experience in the Rocky Mountains. We will all look back on the project with fond memories.

## Custom Designed Element

CAPITAL VALUE ADVISORS

ELSY STUDIOS

Carmen Schechinger, Lynn Coit,

Tia Jenkins and Trent Jensen

### What was the most difficult challenge of this project?

The primary challenge was to get the level of detailing within the client budget. We knew the main impact needed to be in the lobby/entertainment area, but we didn't want the remainder of the office to look neglected.

### How did you resolve it?

We resolved the challenge by working closely with the contractor and millworker to carefully select the appropriate upgrades. We had numerous conversations on creative ways to apply materials and paid close attention to carrying the "rustic modern" vibe throughout the space.

### What was your favorite aspect of this project?

The center millwork unit became complex and everything was integrated together thoughtfully. We kept each component similar proportions which leads you around the office. Repeated details, mixing finishes, custom light fixture surrounds, and barn door hardware make this workspace feel not like an office but more like a high-end lodge.



## Temporary Installation

CAPITAL VALUE ADVISORS

ELSY STUDIOS

Carmen Schechinger, Lynn Coit,

Tia Jenkins and Trent Jensen

### What was the most difficult challenge of this project?

The primary challenge was to get the level of detailing within the client budget. We knew the main impact needed to be in the lobby/entertainment area, but we didn't want the remainder of the office to look neglected.

### How did you resolve it?

We resolved the challenge by working closely with the contractor and millworker to carefully select the appropriate upgrades. We had numerous conversations on creative ways to apply materials and paid close attention to carrying the "rustic modern" vibe throughout the space.

### What was your favorite aspect of this project?

The center millwork unit became complex and everything was integrated together thoughtfully. We kept each component similar proportions which leads you around the office. Repeated details, mixing finishes, custom light fixture surrounds, and barn door hardware make this workspace feel not like an office but more like a high-end lodge.





## Outdoor Spaces

CASTLE PINES RESIDENCE

LIFESCAPE COLORADO

LeAnn Ostheimer and Dan DeGrush

### What was the most difficult challenge of this project?

The clients wanted only clean lines and hard angles to match the contemporary feel of the architecture. Convincing them of the visual necessity for a circle somewhere in the design to avoid creating a space that felt harsh and uninviting was a challenge.

### How did you resolve it?

While 90 degree angles and squares set the stage for the hardscape and architecture, the lone circle we placed in the west lawn wall adds a dramatic accent visible from above and below and brings a welcome sense of suppleness and accord to the design of the project.

### What was your favorite aspect of this project?

Working to create a modern destination in the wilderness, creating focal elements for each axis of the home; a sunken garden and patio, an art sculpture aligned with Pikes Peak, a fire pit retreat, a secluded patio nestled among the pine trees, and a stunning green roof garden.

---

## New Construction Under 4,000 Square Feet

POOLHOUSE

ASHLEY CAMPBELL INTERIOR DESIGN

Ashley Campbell

### What was the most difficult challenge of this project?

Flooding proved to be the biggest challenge to the project. There was extensive water damage to the lower level.

### How did you resolve it?

This issue was a huge budgetary and time constraint. We had to add a whole new sewer line from the pool house to the street, tearing up landscape in the process. Once this was repaired, we could then replace the ruined drywall, carpet, and furniture.

### What was your favorite aspect of this project?

The flexibility of this hard working house is fantastic. Guests from out of town have their own space away from the family's small children. Additionally, the seamless indoor/outdoor functionality make spring and summer entertaining easy. This was also a great place to utilize water-like colors and fun prints.





## New Construction 4,000 - 7,000 Square Feet

MILES RESIDENCE

**DUET DESIGN GROUP**

Duet Design Group Team

### What was the most difficult challenge of this project?

The former client's home and vision for the new home varied significantly in color palette, furniture style and overall architectural elements. The husband and wife had very different opinions on what the style of the new home was to be, therefore, creating a challenge in achieving both their design aesthetics.

### How did you resolve it?

By incorporating existing furniture with upholstery and/or finish modifications, personalizing specific rooms to each of their tastes and coming to a common design vision on communal areas such as the kitchen/family room/etc., we made the husband and wife feel comfortable and heard.

### What was your favorite aspect of this project?

Our favorite aspect of the project was the fantastic fixed finishes, which included gorgeous natural stone running along the interior walls, warm hardwood flooring through the main level, rich marbles and travertine in the bathrooms and stunning light fixtures throughout.



ASID Crystal Awards





# New Construction Over 7,000 Square Feet

LOT 5 RESIDENCE

STUDIO B ARCHITECTURE + INTERIORS

Studio B Architecture + Interiors Team

## What was the most difficult challenge of this project?

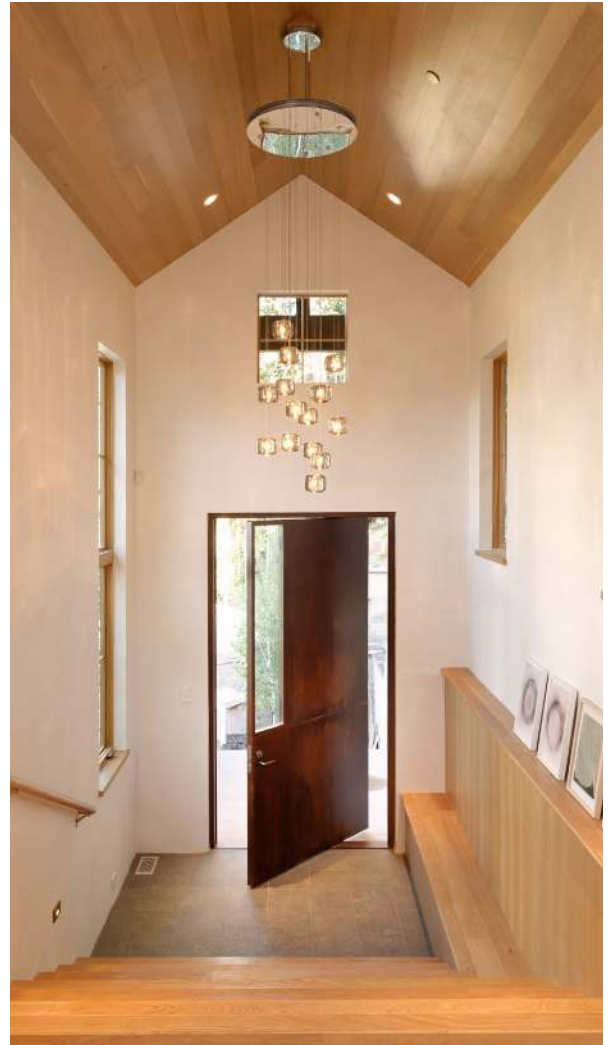
The former client's home and vision for the new home varied significantly in color palette, furniture style and overall architectural elements. The husband and wife had very different opinions on what the style of the new home was to be, therefore, creating a challenge in achieving both their design aesthetics.

## How did you resolve it?

By incorporating existing furniture with upholstery and/or finish modifications, personalizing specific rooms to each of their tastes and coming to a common design vision on communal areas such as the kitchen/family room/etc., we made the husband and wife feel comfortable and heard.

## What was your favorite aspect of this project?

Our favorite aspect of the project was the fantastic fixed finishes, which included gorgeous natural stone running along the interior walls, warm hardwood flooring through the main level, rich marbles and travertine in the bathrooms and stunning light fixtures throughout.



# Renovation Under 4,000 Square Feet

TARAB/KRAFT

FINISHED BASEMENT COMPANY

Erin Van Galder and Teresa Myers

## What was the most difficult challenge of this project?

The Clients wanted a space for wine storage without taking away from the square footage of the unfinished storage/utility room.

## How did you resolve it?

We were able to design a wine storage rack which included two hidden doors for wine storage. The doors open up to the unfinished storage/utility room .

## What was your favorite aspect of this project?

The Clients have a lot of guests who visit and wanted the spaces to be transitional for their needs and their guests when they visit. This resulted in a multi-functional room as a craft room, office space and bedroom, accommodating the needs of all users. The Clients were overwhelmed by the finished result as they can now use this space for more than one purpose.





## Renovation Over 4,000 Square Feet

MCLAIN FLATS

ROWLAND+BROUGHTON

Becky Garrett, Sarah Broughton,  
and Delvon Nemechek

### What was the most difficult challenge of this project?

The team reorganized the space to take advantage of the original geometries and unique character of the existing structure and had to accept and work within the original exposed structure. Instead of rerouting certain elements, they bore the constrained opportunities presented to them and accept the total transparency of the remodel.

### How did you resolve it?

The team created symmetry in the space plan responding to existing architecture. We worked with existing structure to design new partitions, lighting and final finishes.

### What was your favorite aspect of this project?

Alongside the client, our team recognized the architectural uniqueness of this modern relic. Instead of demolishing part of Aspen's architectural history, we are proud of the dedication shown in sharing our passion of preserving architectural legacy and modernizing the home into the 21st century.

## Kitchen

MODERN RUSTIC RANCH KITCHEN

JJ INTERIORS

Jennifer A Jelinek, Jason McConathy, Brad Smith,  
Terra Firma and Carl Rohde

### What was the most difficult challenge of this project?

The architectural layout in the kitchen made for some unique angles in which to design making space planning the biggest challenge to overcome. Doors and large accordion windows contribute to lack of space for storage. With many needed zones including prep, cooking, clean up, entertaining, and eating, square footage disappeared rapidly.

### How did you resolve it?

Spice cabinets were hidden within the range wall. Drawer appliances were tucked in the island. By borrowing space from the pantry, we nestled the entertainment bar nearest to the Great Room and concealed it with pocket doors. The island was enlarged by a reclaimed slab to provide a convenient eating area.

### What was your favorite aspect of this project?

Lighting is inherently tricky but designing solutions for the 2 story ceilings and window-filled walls was enjoyable. The client was open to interesting fixtures and layered solutions incorporating uplights highlighting architectural trusses, wall sconces to provide task lighting near the window-facing sink, and a dramatic chandelier above the island.



# Bath

SERENE SANCTUARY

ASHLEY CAMPBELL INTERIOR DESIGN

Jodi Cook



## What was the most difficult challenge of this project?

Creating the ideal plan was the greatest challenge of this project. The existing architectural features, including a window in the would-be shower and a large tub needed to be reworked to open up space and create more privacy for the homeowners.

## How did you resolve it?

We removed the tub deck and replaced it with a freestanding tub with window above to gain more space for a shower. The once empty hallway was converted to usable space with millwork as linen storage below and coffee bar above. A barn door covered unsightly drywall and divided the space from the bedroom.

## What was your favorite aspect of this project?

My favorite part of this redesign was the weathered wood ceiling. Using steel wool and vinegar to “pickle” normal planks, my contractor and I achieved the look of reclaimed wood without the waste. This feature added a lot of warmth and character to the room, both rustic and refined.



# Single Space, Dedicated Function (Residential)

HALEAKALA WINE ROOM

HARRISON BROWNE INTERIOR DESIGN

Debra Browne, Kristin Hall, John Baker, Ridge Runner

Construction/ Nicholas Lough

## What was the most difficult challenge of this project?

The glass floor specification process.

## How did you resolve it?

We consulted and decided that covering the original floor joists would solve the problem of calculation for spanning the space with glass.

## What was your favorite aspect of this project?

Styling the scene below the glass floor, was our favorite element.

